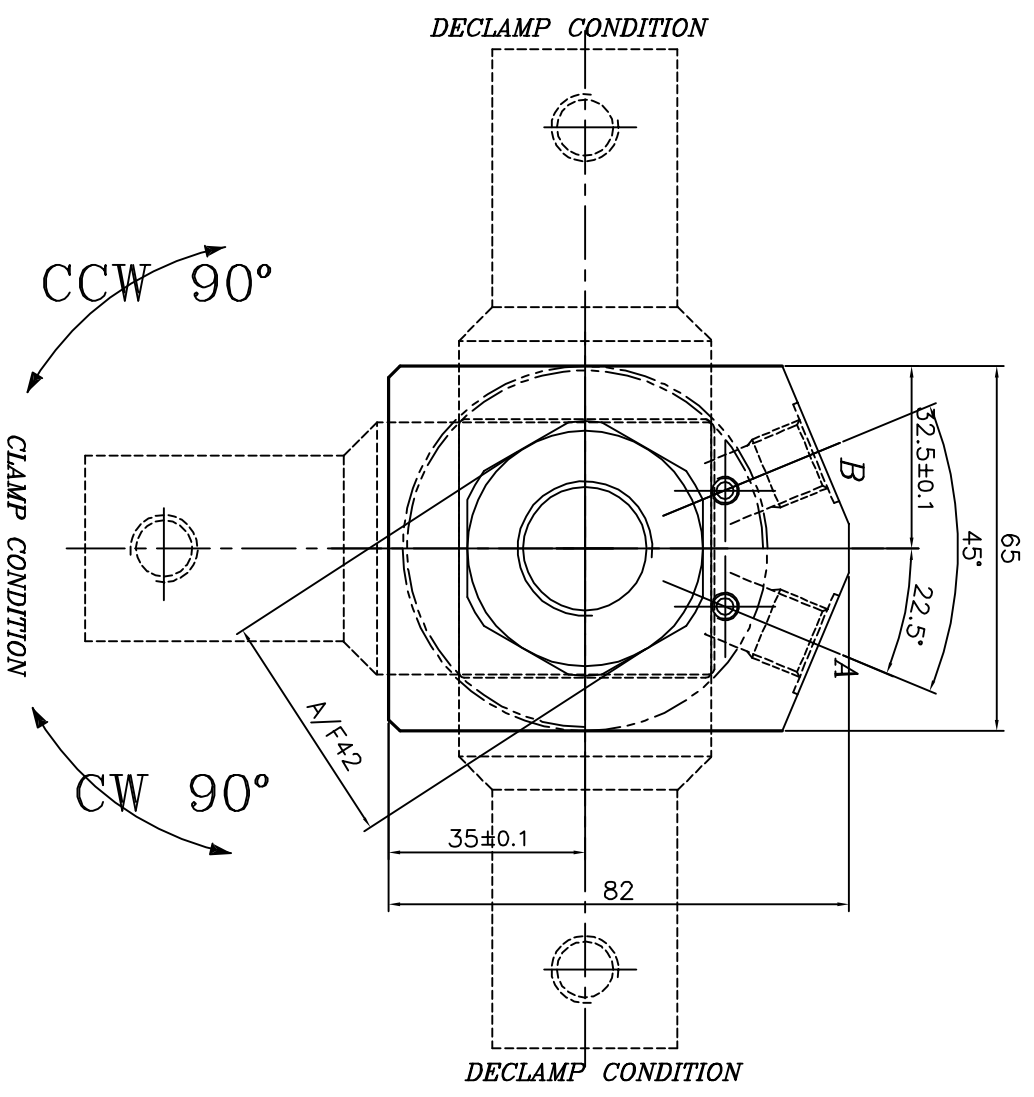


A-Clamp port  
B-Declamp port

**Specification:-**  
 Type : Doble acting hydraulic cylinder.  
 Bore dia = 40 mm, rod dia = 32 mm  
 Clamp Stroke =10; Swing Stroke = 20 mm  
 Total Stroke = 30  
 Arm swing will be 90°±2°  
 Operating pressure : max 150 bar/min 25 bar  
 Medium :Hydraulic oil  
 (servo system HLP46/HLP68)  
 Model NO-C.W-S22303  
 C.C.W-S22304

- 1.0 GENERAL  
 1.1 ALL DIMENSIONS ARE IN MM.  
 1.2 DO NOT SCALE THE DRG.IF IN DOUBT ASK.  
 1.3 SUBJECT TO CHANGE FOR IMPROVEMENT.



REVISION				DATE	APPROVED
ZONE	REV	FROM	TO	DATE	APPROVED

SURFACE FINISH		GENERAL TOLERANCES WHERE NOT SPECIFIED		ANGULAR-LENGTH IN MM OF SHORT SIDE OF ∠	
Ro value μm	Symbol	Length or Diameter	Tolerance	Length	Tolerance
0.5-6	▽	6-30	±0.2	UP TO 6	±30'
6-30	▽▽	30-120	±0.3	6-30	±20'
30-120	▽▽▽	120-315	±0.5	30-120	±10'
120-315	▽▽▽▽	315-1000	±0.8	120-400	±10'
315-1000	▽▽▽▽▽	1000-2000	±1.2		
1000-2000	▽▽▽▽▽▽				

SCALE: 1:1	TITLE: SWING CLAMP THREADED BODY	MATERIAL: XXX	SHEET NO: 1 OF 1
DESIGN: TIRUMAL	DATE: 22.08.08	GROUP NO: -	REPLACES: -
DRAWN: TIRUMAL	DATE: 22.08.08	SUPERCEDED BY: -	
CHECKED: -		DRAWING NO: -	
APPROVED: -			

1 2 3 4 5 6 7 8

**QUICLOC**  
**PVT LTD**  
**Blore - 70**