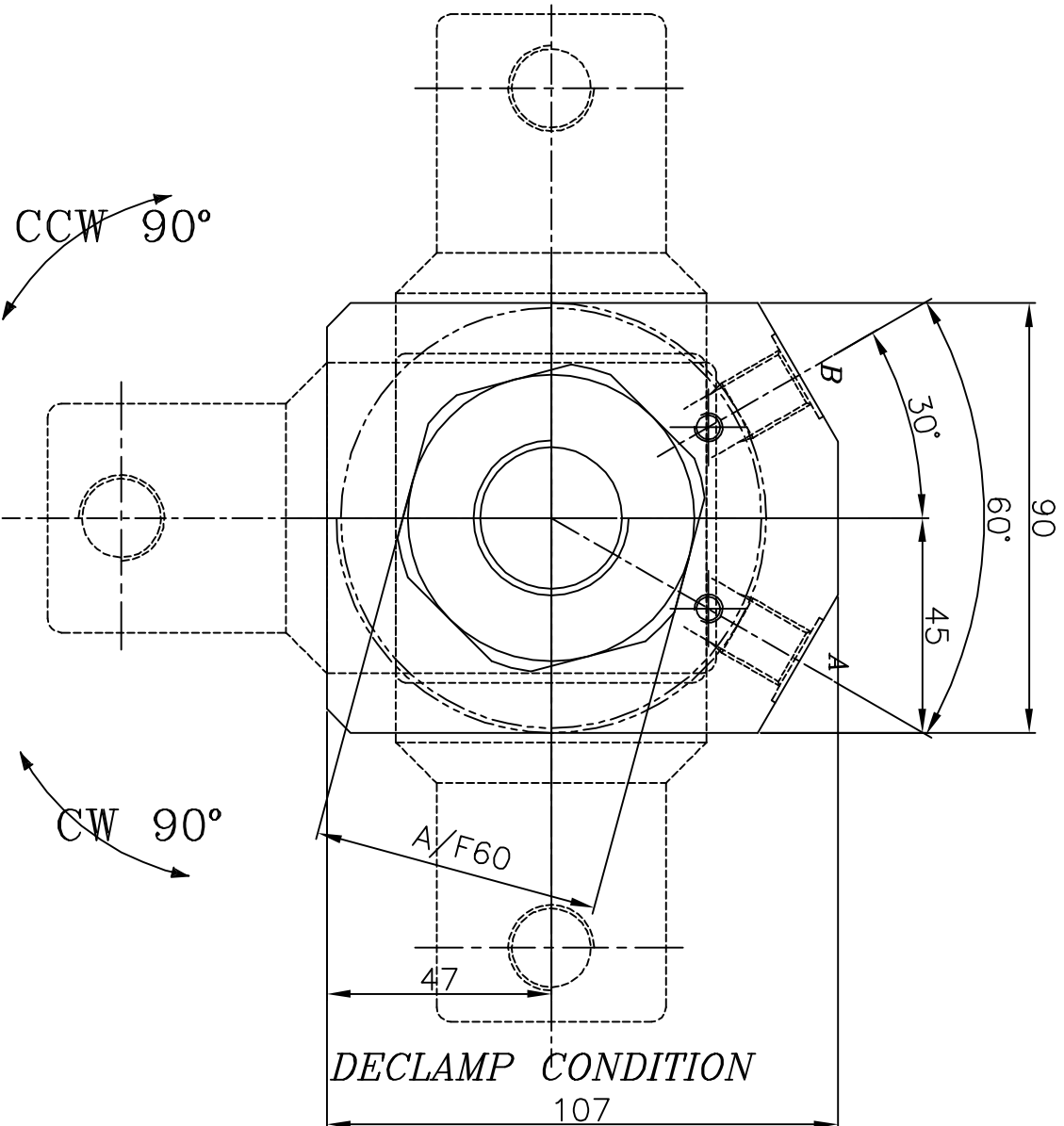


DECLAMP CONDITION



CLAMP CONDITION

A-Clamp port
B-Declamp port

Specification:-
 Type : Double acting hydraulic cylinder.
 Bore dia = 63 mm, rod dia = 50 mm
 Clamp Stroke =10; Swing Stroke = 20 mm
 Total Stroke = 30
 Arm swing will be 90°±2°
 Operating pressure : max 250 bar/min 10 bar
 Medium :Hydraulic oil
 (servo system HLP46/HLP68)
 Model NO-C.W-S21305
 C.C.W-S21306

- 1.0 GENERAL
 1.1 ALL DIMENSIONS ARE IN MM.
 1.2 DO NOT SCALE THE DRG.IF IN DOUBT ASK.
 1.3 SUBJECT TO CHANGE FOR IMPROVEMENT.

SURFACE FINISH		▽▽▽	▽▽▽	▽▽	▽	~	
Ra value μm		0.025	0.05	0.1	0.2	0.4	0.8
LINEAR - LENGTH OR DIAMETER		0.5-6	6-30	30-120	120-315	315-1000	1000-2000
ANGULAR-LENGTH IN MM OF SHORT SIDE OF ∠		±0.1	±0.2	±0.3	±0.5	±0.8	±1.2
SCALE:		1:1		-			
DESIGN	THIRUMAL	DATE	22.08.08	TITLE			
DRAWN	THIRUMAL	MACHINE TYPE		SWING CLAMP THREADED BODY			
CHECKED		CUSTOMER:		TOP FLANGE DOUBLE ACTING			
APPROVED		DRAWING NO:		-			
GROUP NO:		SUPERCEDED BY		REPLACES			
MATERIAL:		XXX		SHEET NO:		1 OF: 1	
QUICLOC		PVT LTD		Blore - 70			

REVISION				
ZONE	REV	FROM	TO	DATE

1 2 3 4 5 6 7 8

A B C D E F