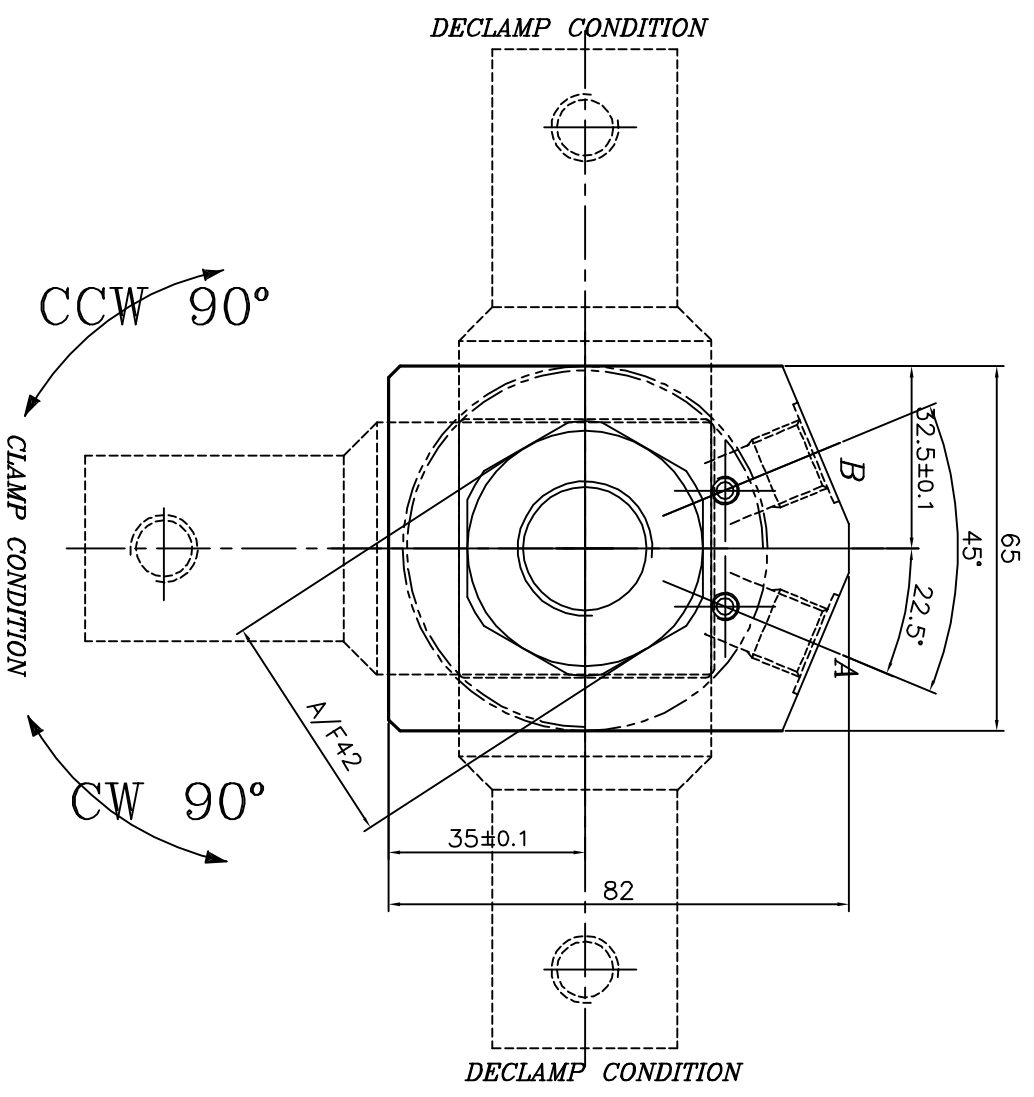


A-Clamp port
B-Declamp port

Specification:-
 Type : Doble acting hydraulic cylinder.
 Bore dia = 40 mm, rod dia = 32 mm
 Clamp Stroke =10; Swing Stroke = 20 mm
 Total Stroke = 30
 Arm swing will be 90°±2°
 Operating pressure : max 150 bar/min 25 bar
 Medium :Hydraulic oil
 (servo system HLP46/HLP68)
 Model NO-C.W-S21303
 C.C.W-S21304

- 1.0 GENERAL
 1.1 ALL DIMENSIONS ARE IN MM.
 1.2 DO NOT SCALE THE DRG.IF IN DOUBT ASK.
 1.3 SUBJECT TO CHANGE FOR IMPROVEMENT.



REVISION				
ZONE	REV	FROM	TO	DATE

SURFACE FINISH		▽▽▽	▽▽▽	▽▽▽	▽▽	▽	~	
Ra value μm		0.025	0.05	0.1	0.2	0.4	0.8	1.6
LINEAR - LENGTH OR DIAMETER		0-5	6-30	30-120	120-315	315-1000	1000-2000	UP TO 6
ANGULAR-LENGTH IN MM OF SHORT SIDE OF ∠		6-30	6-30	30-120	30-120	120-400	120-400	
GENERAL TOLERANCES WHERE NOT SPECIFIED		±0.1	±0.2	±0.3	±0.5	±0.8	±1.2	±1'
SCALE:		1:1						
TITLE		SWING CLAMP THREADED BODY						
DESIGN		TIRUMAL		22.08.08		MACHINE TYPE		
DRAWN		TIRUMAL		22.08.08		CUSTOMER:		
CHECKED								
APPROVED								
GROUP NO:		XXX						
SUPERCEDED BY		-						
REPLACES		-						
DRAWING NO:		-						
MATERIAL:		XXX						
SHEET NO:		1 OF: 1						
QUICLOC PVT LTD		Bloure - 70						

1 2 3 4 5 6 7 8

1 2 3 4 5 6 7 8

A

B

C

D

E

F