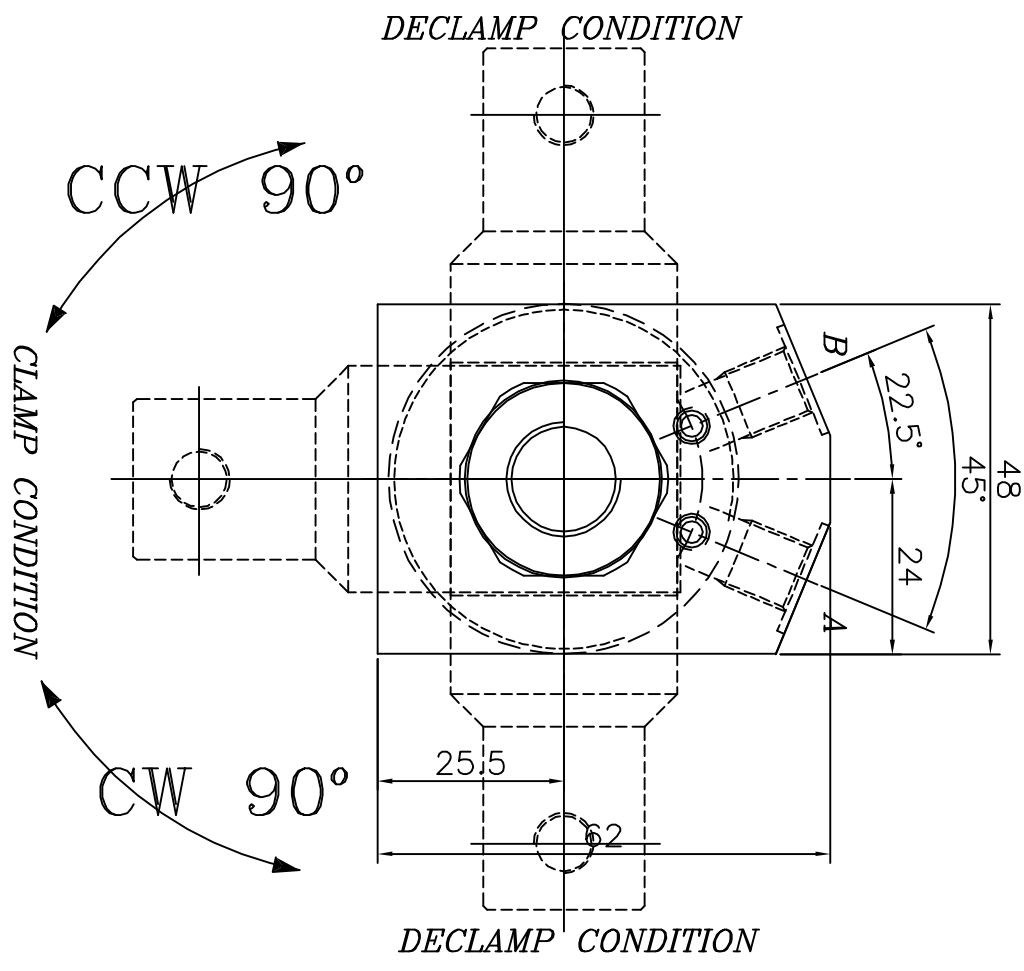
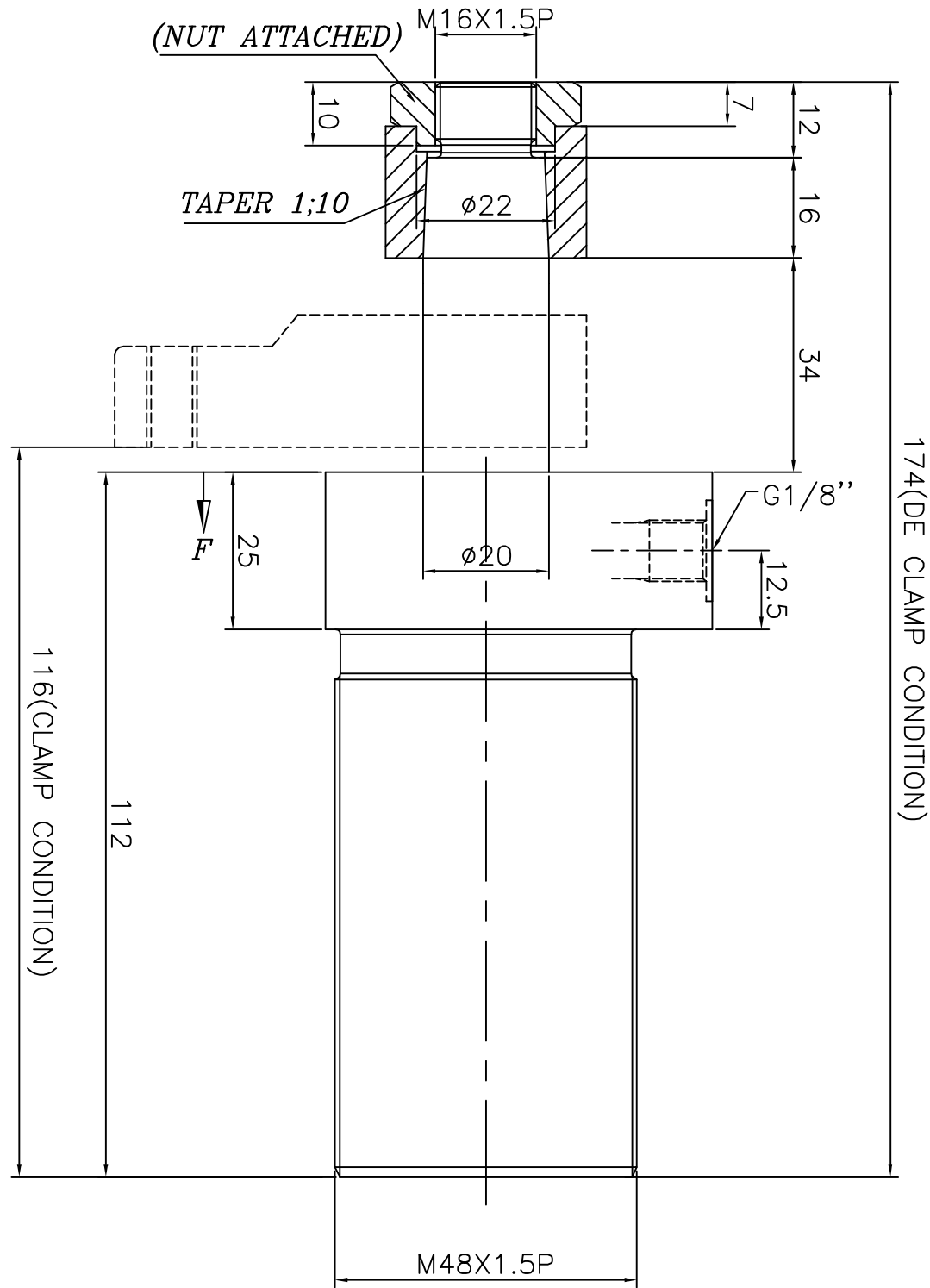


1	2	3	4	5	6	7	8
						REVISION	
ZONE	REV	FROM	TO	DATE	APPROVED		



A-Clamp port
B-Declamp port

Specification:-

Type : Double acting hydraulic cylinder.
Bore dia = 25 mm, rod dia = 20 mm
Clamp Stroke = 10; Swing Stroke = 20 mm
Total Stroke = 30
Arm swing will be 90°±2°
Operating pressure : max 250 bar/min 10 bar
Medium :Hydraulic oil (servo system HLP46/HLP68)

Model NO-C.W-S21301
C.C.W-S21302

- 1.0 GENERAL
1.1 ALL DIMENSIONS ARE IN MM.
1.2 DO NOT SCALE THE DRG.IF IN DOUBT ASK.
1.3 SUBJECT TO CHANGE FOR IMPROVEMENT.

SURFACE FINISH		▽▽▽	▽▽▽	▽▽▽	▽▽	▽	~	QUICLOC PVT LTD Blore - 70
Ra value μm		0.025	0.05	0.1	0.2	0.4	0.8	
LINEAR - LENGTH OR DIAMETER		GENERAL TOLERANCES WHERE NOT SPECIFIED						ANGULAR-LENGTH IN MM OF SHORT SIDE OF ∠
0.5-6	6-30	30-120	120-315	315-1000	1000-2000	UP TO 6	6-30	
±0.1	±0.2	±0.3	±0.5	±0.8	±1.2	±1'	±30'	
SCALE:		1:1						MATERIAL: XXX
TITLE		SWING CLAMP THREADED BODY						SHEET NO: 1 OF: 1
DESIGN		TIRUMAL		22.08.08		TOP FLANGE DOUBLE ACTING		
DRAWN		TIRUMAL		22.08.08		MACHINE TYPE		
CHECKED		CUSTOMER:						GROUP NO:
APPROVED		DRAWING NO: -						SUPERCEDED BY
								REPLACES