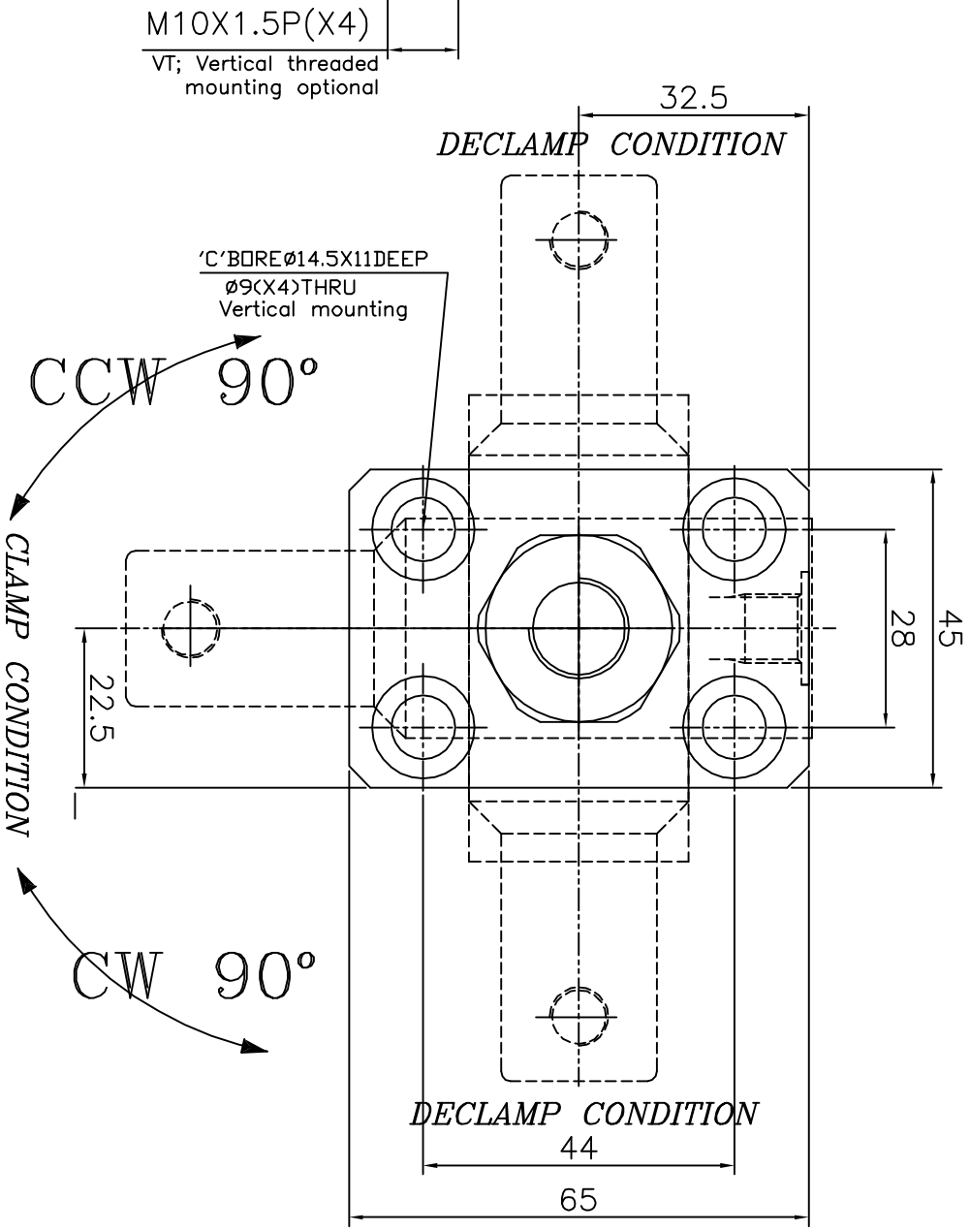
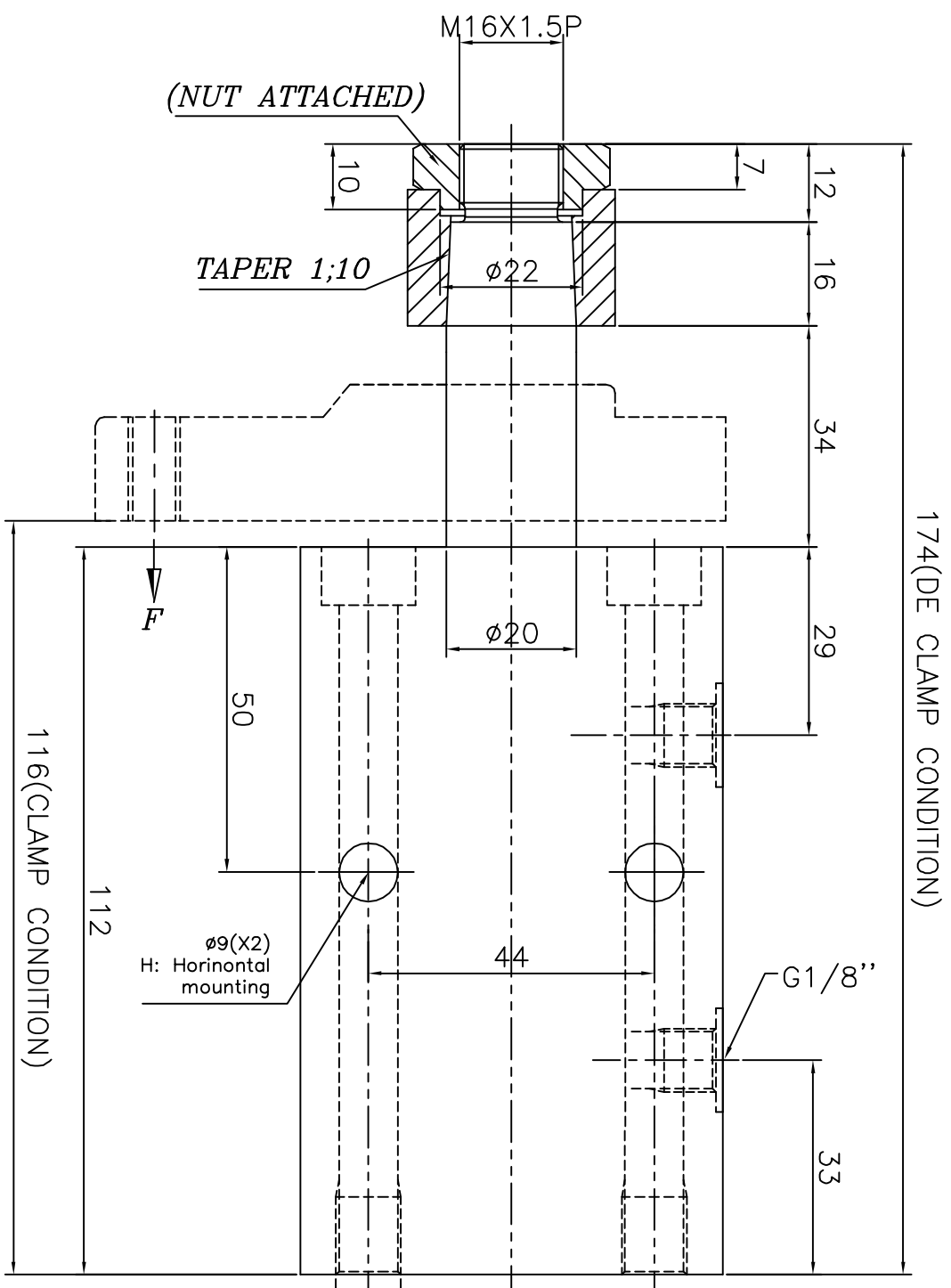


REVISION				
ZONE	REV	FROM	TD	DATE



Specification:-

Type : Double acting hydraulic cylinder.
 Bore dia = 25 mm, rod dia = 20 mm
 Clamp Stroke = 10; Swing Stroke = 20 mm
 Total Stroke = 30
 Arm swing will be 90°±2°
 Operating pressure : max 250 bar/min 10 bar
 Medium :Hydraulic oil
 (servo system HLP46/HLP68)
 Model NO-C.W-S11301
 C.C.W-S11302

- 1.0 GENERAL
 1.1 ALL DIMENSIONS ARE IN MM.
 1.2 DO NOT SCALE THE DRG.IF IN DOUBT ASK.
 1.3 SUBJECT TO CHANGE FOR IMPROVEMENT.

SURFACE FINISH		LINEAR - LENGTH OR DIAMETER		ANGULAR-LENGTH IN MM OF SHORT SIDE OF ∠	
Ra value	µm	0.5-6	6-30	30-120	120-315
0.025	0.05	0.1	0.2	0.4	0.8
0.05	0.1	0.2	0.4	0.8	1.6
0.1	0.2	0.4	0.8	1.6	3.2
0.2	0.4	0.8	1.6	3.2	6.3
0.4	0.8	1.6	3.2	6.3	12.5
0.8	1.6	3.2	6.3	12.5	25
1.6	3.2	6.3	12.5	25	50
3.2	6.3	12.5	25	50	100

SCALE:	1:1
DESIGN	TIRUMAL
DATE	22.08.08
DRAWN	TIRUMAL
CHECKED	
APPROVED	

TITLE	BLOCK SWING CLAMP
MACHINE TYPE	DOUBLE ACTING
CUSTOMER:	

GROUP NO:	XXX
SUPERCEDED BY	
REPLACES	
DRAWING NO:	

MATERIAL:	XXX
SHEET NO:	1 OF 1

QUICLOC PVT LTD
Blore - 70