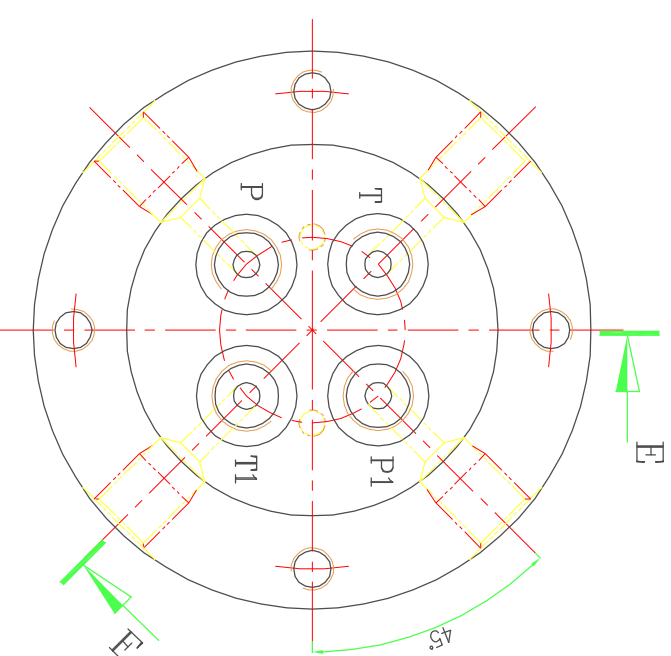
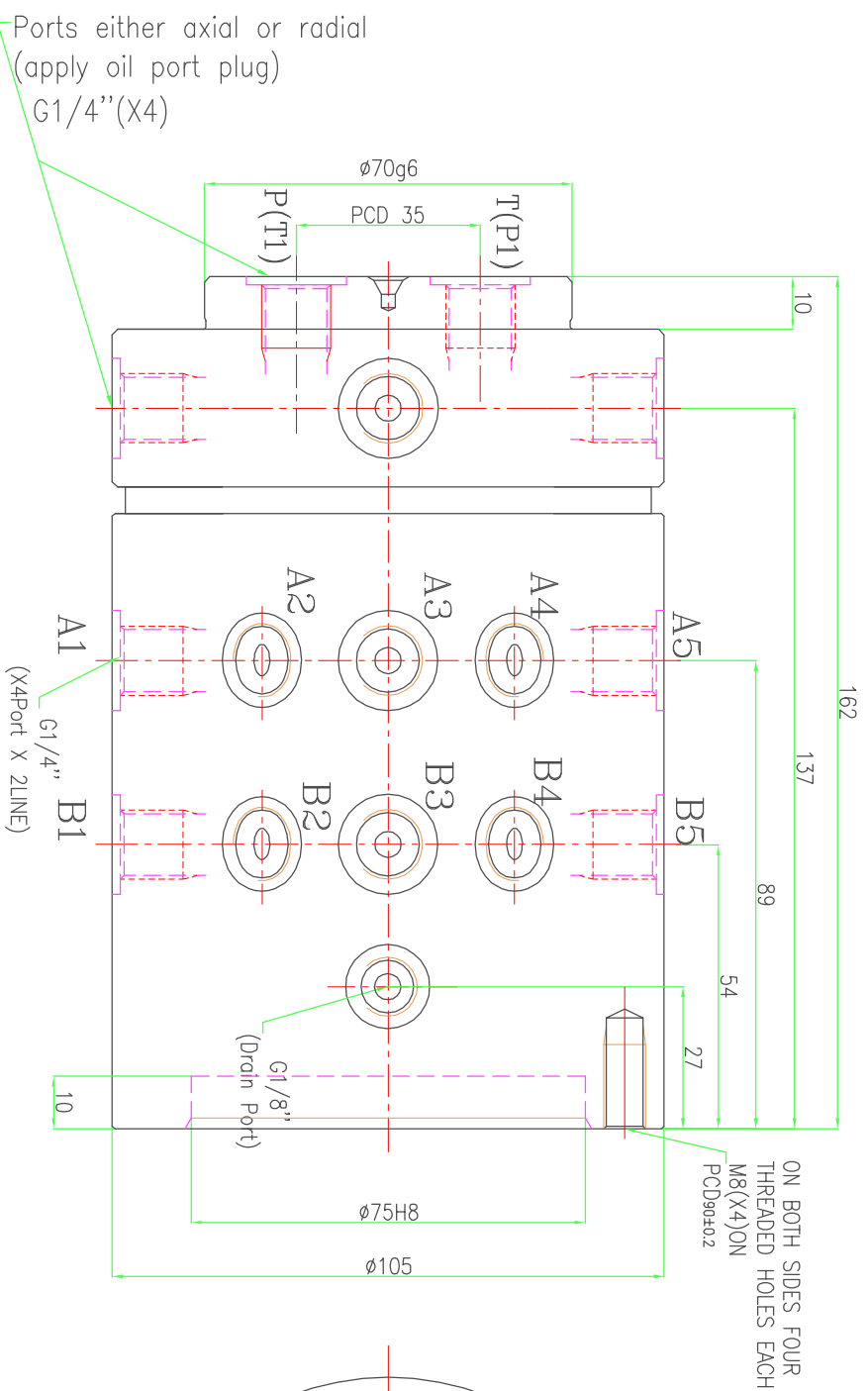
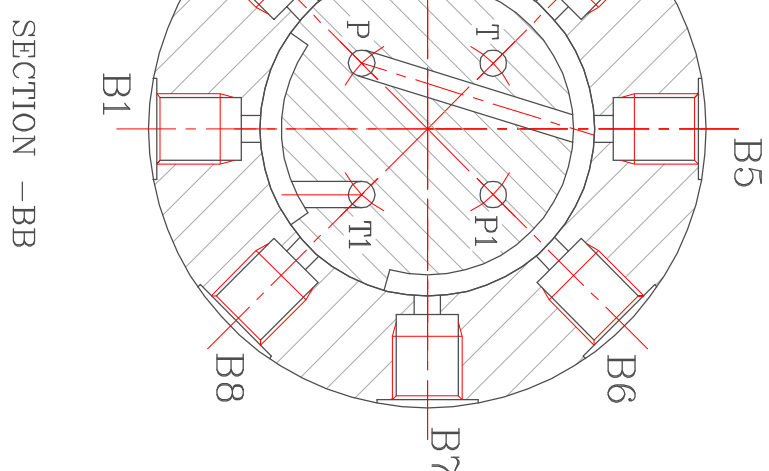
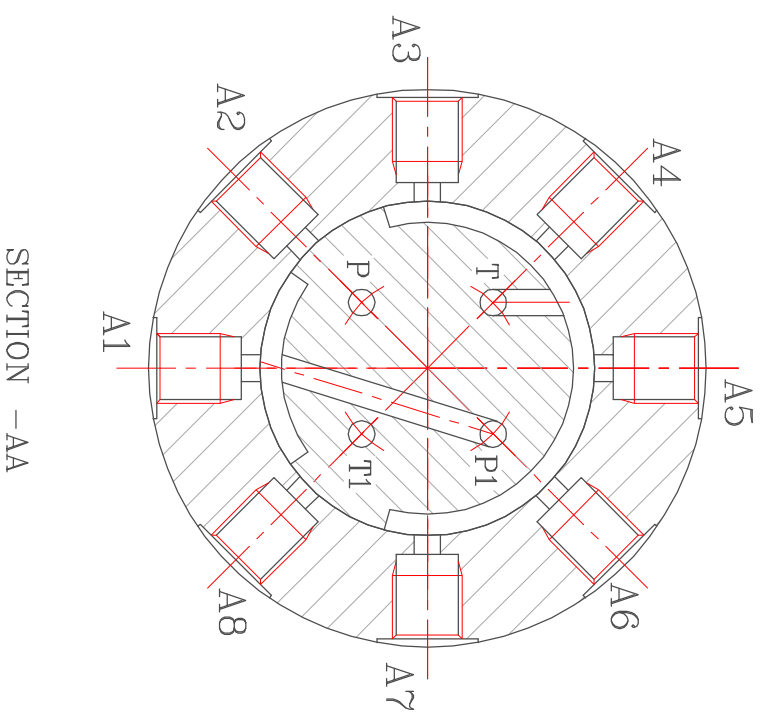


REVISION					
ZONE	REV	FROM	TD	DATE	APPROVED



- NOTE**
IMPORTANT:
- 1) Mounting should not induce side loading on to the rotary distributor Housing. Anti-rotation mounting should not constrain the rotary distributor side ways.
 - 2) No leak port is provided. Hence Assy will have some nominal leakages, which will lubricate the phosphor bronze thrust bearing faces of the spacers.
 - 3) Use always clean filtered oil in the power pack.

- Specifications:**
1. Max. operating pressure: 200 bar (Lubricants via air)
 2. Operating speed range: 1 RPM (max)
 3. Number of input lines to Non-rotating part: 4 Hydraulic
 4. Number of output lines from the Rotating part: 4 Hydraulic
1) Hydraulic – 2 lines (8 Ports)
 5. Hydraulic connection size: G1/4" & G1/8" ports suitable for fittings with copper washers.



- 1.0 GENERAL**
- 1.1 ALL DIMENSIONS ARE IN MM.
 - 1.2 DO NOT SCALE THE DRG. IF IN DOUBT ASK.

SURFACE FINISH	SYMBOL	VALUE	ALL UNSPECIFIED EDGES TO BE REMOVED	QUICKLOC PVT. LTD Blore - 70					
Roe value μm	$\sqrt{\quad}$	0.025 0.05 0.1 0.2 0.4 0.8 1.6 3.2 6.3 12.5 25 50 100							
GENERAL TOLERANCES WHERE NOT SPECIFIED									
LINEAR - LENGTH OR DIAMETER		ANGULAR IN MM OF SHORT SIDE OF							
0.5-6	6-30	30-120	120-315	315-1000	1000-2000	PTO 6	6-30	30-120	120-400
± 0.1	± 0.2	± 0.3	± 0.5	± 0.8	± 1.2	$\pm 1^\circ$	$\pm 30'$	$\pm 20'$	$\pm 10'$
W.O.NO.	SCALE	TITLE		MATERIAL	QTY				
	1:1	HYDRAULIC ROTARY		-	1				
DESIGN NAME	DATE	VALVE FOR DOUBLE ACTING		GROUP NO.					
TIRUMAL	05.02.07			SHEET NO.	1	OF	1		
DRAWN	TIRUMAL	09.02.07	MACHINE TYPE	DRAWING NO.	V21303	REV	1		
CHECKED				APPROVED					