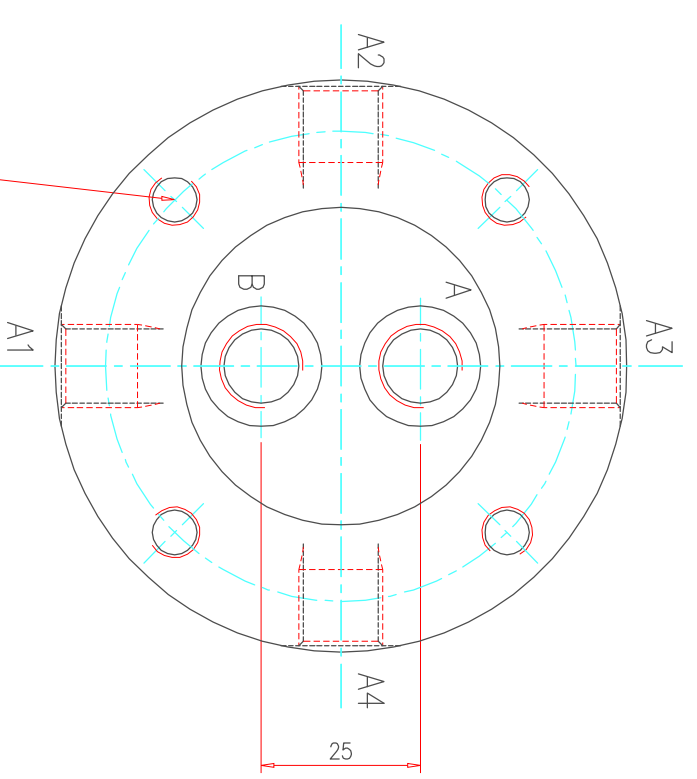
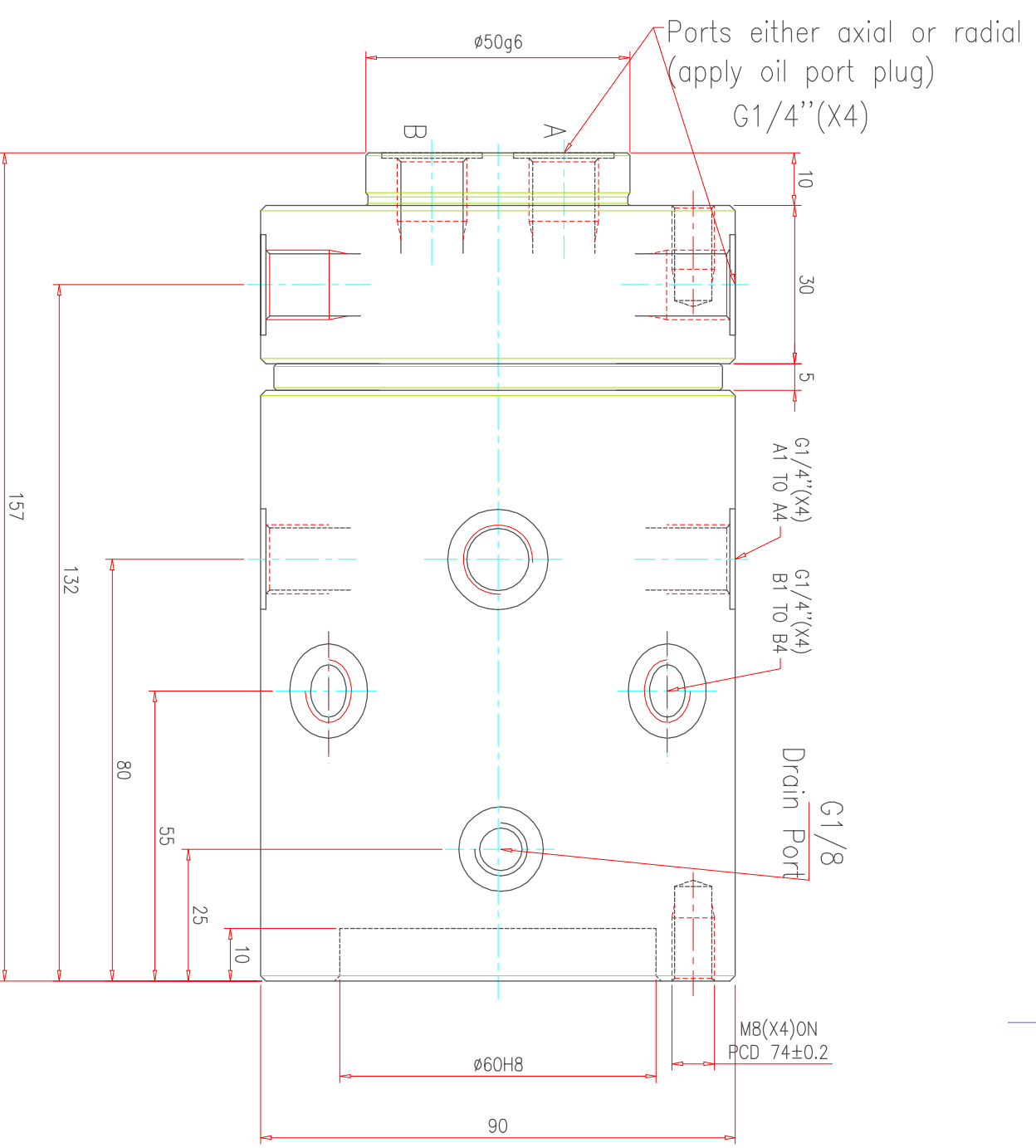


REVISION					
ZONE	REV	FROM	TO	DATE	APPROVED



M8x16deep (x4)for mounting
on pcd74±0.2

- Specifications:**
1. Max. operating pressure:100 bar(Lubricants via air)
 2. Operating speed range: 4 RPM (max)
 3. Number of Input lines to Non-rotating part: 2Hydraulic
 4. Number of output lines from the Rotating part:
 - 1) Hydraulic –2 lines (4 Ports)
 5. Hydraulic connection size: G1/4" & G1/8" ports suitable for fittings with copper washers.

NOTE
IMPORTANT:

- 1) Mounting should not induce side loading on to the rotary distributor Housing
Anti-rotation mounting should not constrain the rotary distributor side ways.
- 2) No leak port is provided. Hence Assy will have some nominal leakages,which will lubricate the phosphor bronze thrust bearing faces of the spacers.
- 3) Use always clean filtered oil in the power pack.

SURFACE FINISH		▽▽▽	▽▽▽	▽▽▽	▽▽	▽	~
Re value μm		0.025	0.05	0.1	0.2	0.4	0.8
GENERAL TOLERANCES WHERE NOT SPECIFIED							
LINEAR - LENGTH OR DIAMETER		±0.1	±0.2	±0.3	±0.5	±0.8	±1.2
ANGULAR-LENGTH IN MM OR SHORT SIDE OF		±10'	±20'	±30'	±1°	±1°	±1°
MATERIAL		-					
SHEET NO		1 of 1					
QUICLOC		PVT LTD					
Bloure - 70							
TITLE		DISTRIBUTOR					
SCALE		1:1					
DESIGN		Thirumal		DATE		20-09-06	
DRAWN		Thirumal		MACHINE TYPE		-	
CHECKED				CUSTOMER:			
APPROVED				DRAWING NO.		V31201	