

1

2

3

4

A

A

B

B

C

C

D

D

E

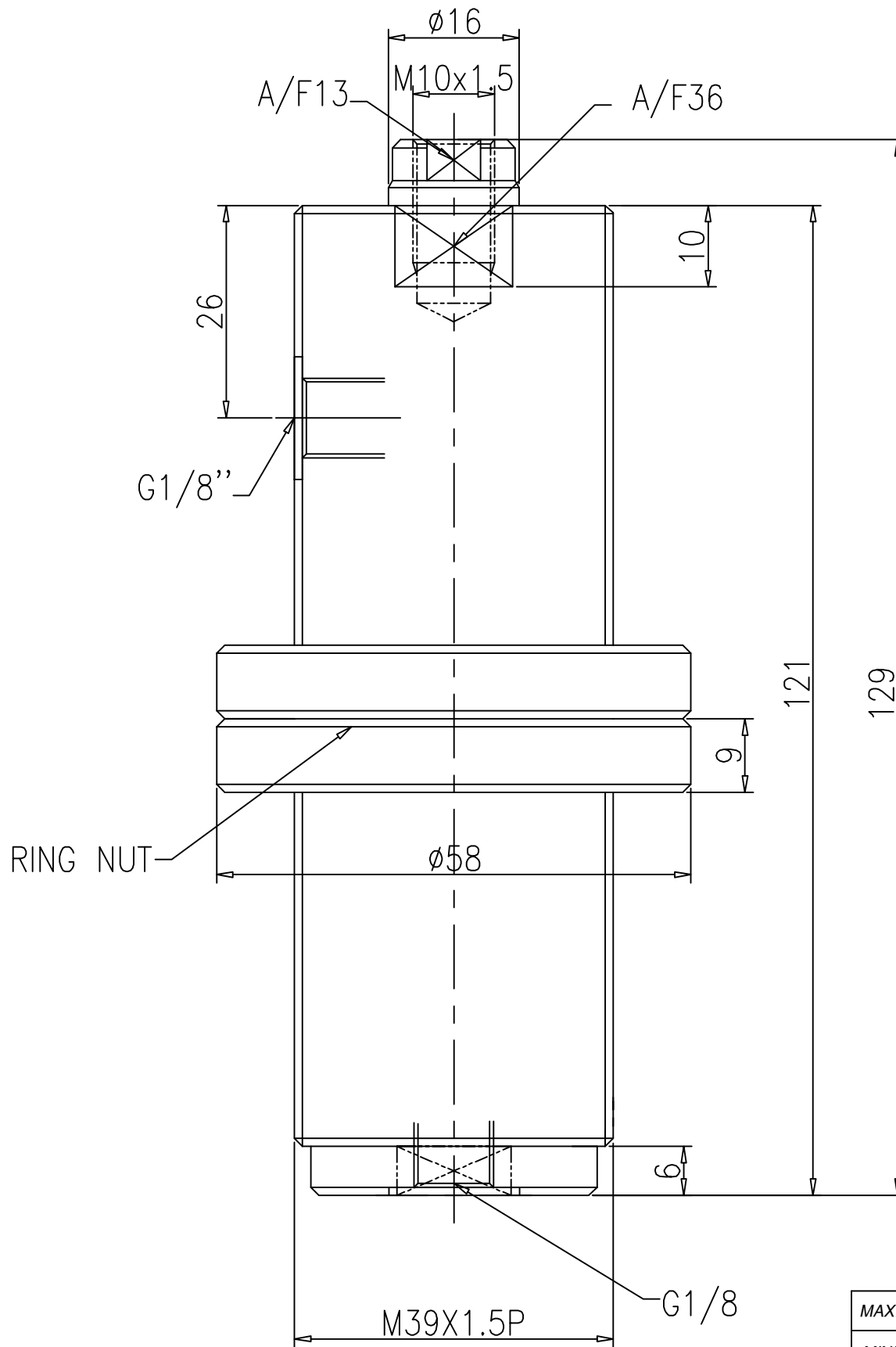
E

F

F

SHEET FORMATS-1, FORMAT NO: F-8-DGN-10, Sht1 of 2 DT.01-11-05 Rew No-00-A4

REVISION					
ZONE	REV	FROM	TO	DATE	APPROVED



## 1.0 GENERAL

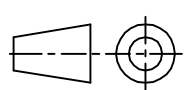
- 1.1 ALL DIMENSIONS ARE IN MM.
- 1.2 DO NOT SCALE THE DRG. IF IN DOUBT ASK.
- 1.3 ROUND OFF THE UNSPECIFIED EDGES.
- 1.4 DEBURR ALL OVER.

MAXIMUM OPERATING PRESSURE	250 BAR
MINIMUM OPERATING PRESSURE	10 BAR
STROKE	40 MM
DISPLACEMENT IN CC	19.5 cc
PISTON AREA	4.9 SQ.CM

SURFACE FINISH													
Ra value $\mu m$	0.025	0.05	0.1	0.2	0.4	0.8	1.6	3.2	6.3	12.5	25	50	100

GENERAL TOLERANCES WHERE NOT SPECIFIED

LINEAR - LENGTH OR DIAMETER						ANGULAR - LENGTH IN MM OF SHORT SIDE OF $\angle$			
0.5-6	6-30	30-120	120-315	315-1000	1000-2000	UPTO 6	6-30	30-120	120-400
$\pm 0.1$	$\pm 0.2$	$\pm 0.3$	$\pm 0.5$	$\pm 0.8$	$\pm 1.2$	$\pm 1'$	$\pm 30'$	$\pm 20'$	$\pm 10'$



**QUICLOC**  
**PVT LTD**  
**B'lore - 70**

SCALE	1:1	-	TITLE	<b>MINI THREADED BODY CYLINDER D/A</b>		MATERIAL	XXX	SHEET NO	1 OF 1
DESIGN	TIRUMAL	28-10-05	BORE- $\phi 25$ XROD $\phi$ -16XSTROKE-40 mm	MACHINE TYPE		GROUP NO.	-	SUPERCEDED BY	REPLACES
DRAWN	TIRUMAL	24-03-06	CUSTOMER:	-		DRAWING NO.	A52304		
CHECKED									
APPROVED									

1

2

3

4