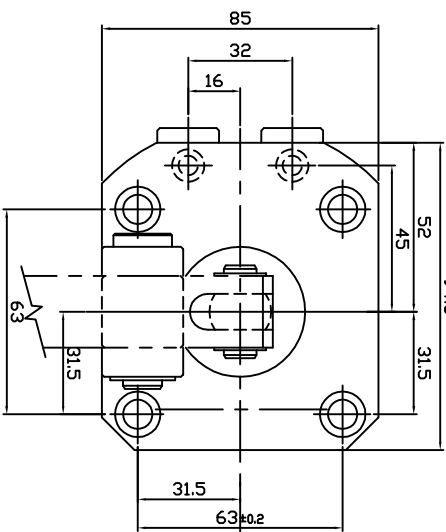
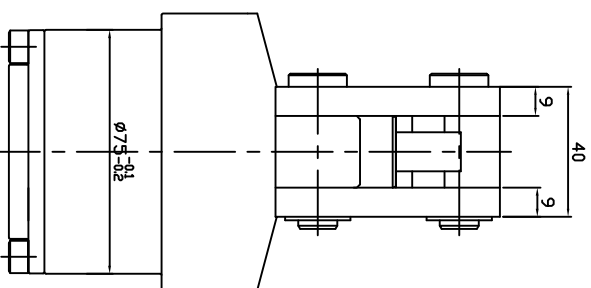
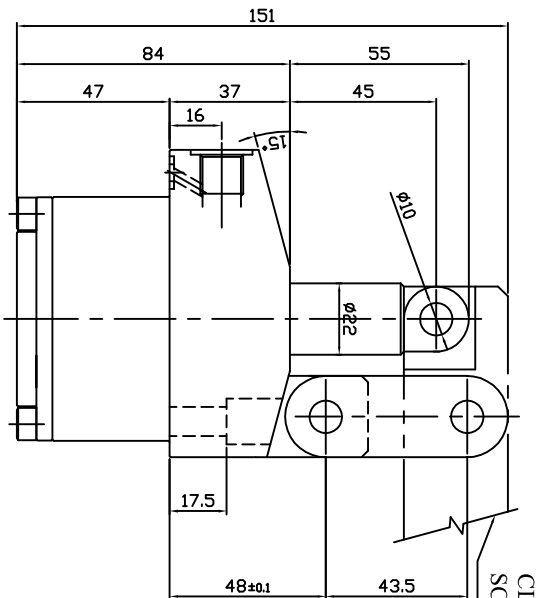


REVISION				DATE	APPROVED
ZONE	REV	FROM	TO		



SURFACE FINISH	0.025	0.05	0.1	0.2	0.4	0.8	1.6	3.2	6.3	12.5	25	50	100
Rad value μm	▽▽▽▽	▽▽▽	▽▽	▽	▽	▽	▽	▽	▽	▽	▽	▽	▽

GENERAL TOLERANCES WHERE NOT SPECIFIED		ANGULAR-LENGTH IN MM OF SHORT SIDE OF ∠	
LINEAR - LENGTH OR DIAMETER	120-315	315-1000	1000-2000
	±0.1	±0.2	±0.3

**Specification:-**

Type : Double acting hydraulic cylinder.  
 Bore dia = 55 mm, rod dia = 22 mm  
 Full Stroke = 35; LockStroke = 32 mm  
 Reserve Stroke = 3 mm  
 Operating pressure : max 70 bar/min 10 bar  
 Hydraulic oil :Hydraulic oil  
 (servo system HLP46/HLP68)

DESIGN	PRAVEEN	DATE	10/12/09	MACHINE TYPE	Double Acting	GROUP NO.	-	REPLACES	-
DRAWN	PRAVEEN	DATE	10/12/09	CUSTOMER	-	SUPERCEDED BY	-		
CHECKED									
APPROVED									

QUICLOC	PVT LTD	SHEET NO	OF
B'lore - 70			

DRAWING NO. S35306-CR