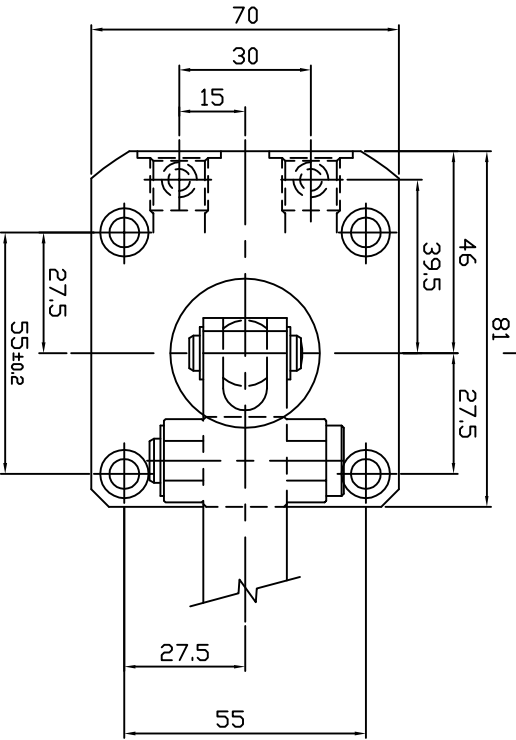
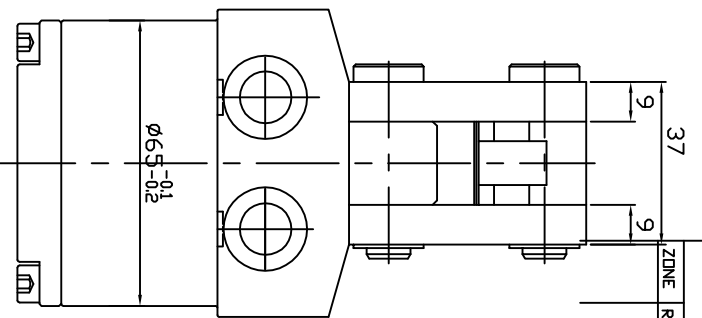
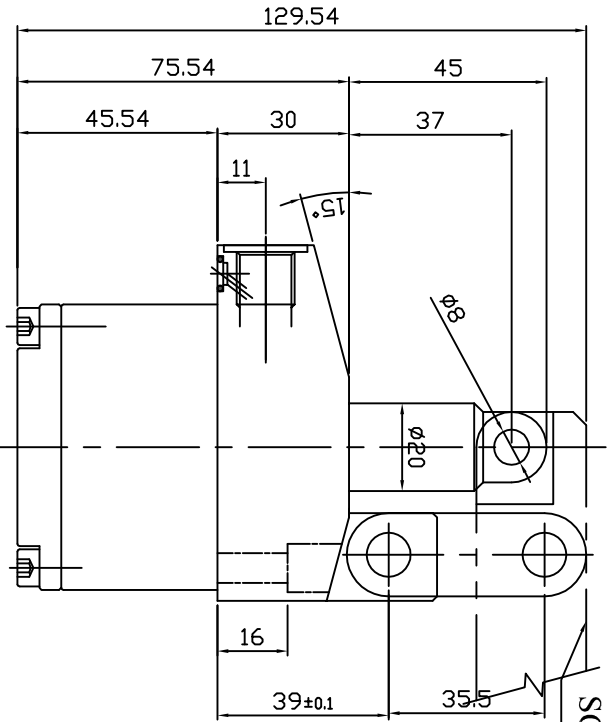


CLAMP CUSTOMER
SCOPE



Specification:-

Type : Double acting hydraulic cylinder.
 Bore dia = 45 mm, rod dia = 20 mm
 Full Stroke = 88.6; Lockstroke = 86.5 mm
 Reserve Stroke = 3 mm
 Operating pressure : max 70 bar/min 10 bar
 Medium :Hydraulic oil
 (series system HLR46/RLR46)

REVISION		TO	DATE	APPROVED
ZONE	REV	FROM		

SURFACE FINISH	REQUIREMENT	SYMBOL	REQUIREMENT	SYMBOL	REQUIREMENT	SYMBOL	REQUIREMENT	SYMBOL	REQUIREMENT	SYMBOL	REQUIREMENT	SYMBOL
Surface Finish	Re value μm	0.025	0.05	0.1	0.2	0.4	0.8	1.6	3.2	6.3	12.5	25

GENERAL TOLERANCES WHERE NOT SPECIFIED		ANGULAR-LENGTH IN MM OF SHORT SIDE OF \angle	
LINEAR - LENGTH OR DIAMETER	0.5-6	UP TO 6	6-30
	6-30	6-30	30-120
	30-120	120-315	120-400
	120-315	315-1000	
	315-1000	1000-2000	

SCALE	TITLE	MATERIAL	SHEET NO
1:1	VERTICAL SWING CLAMP		OF

DESIGN	NAME	DATE	GROUP NO.
PRAVEEN		10/12/09	

DRAWN	MACHINE TYPE	SUPERCEDED BY	REPLACES
PRAVEEN			

CHECKED	CUSTOMER	DRAWING NO.
		S35305-CC

APPROVED	CUSTOMER	DRAWING NO.
		S35305-CC