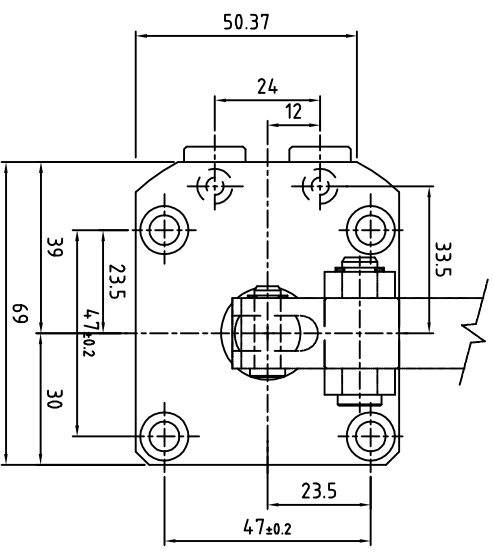
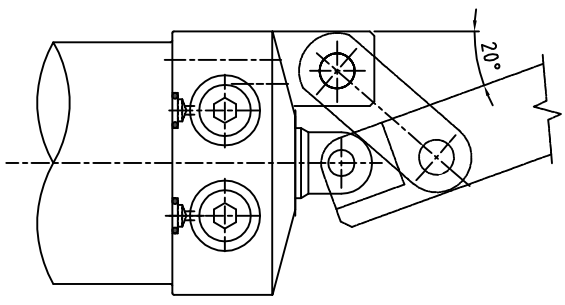
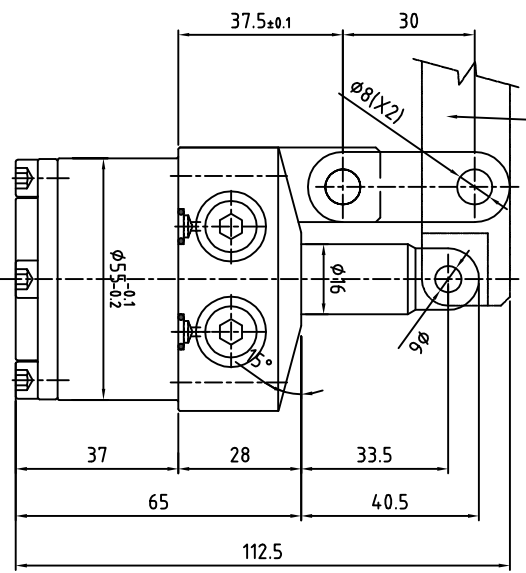
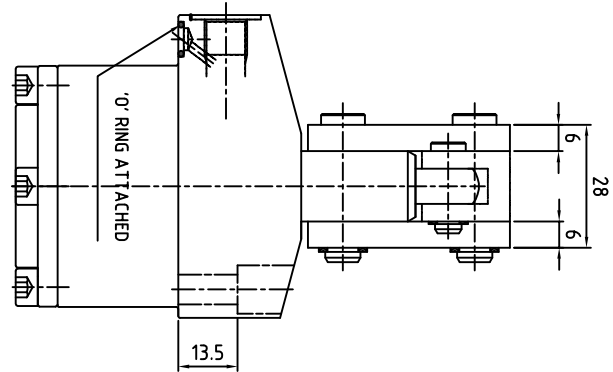


REVISION		TO	DATE	APPROVED
ZONE	REV	FROM		

CLAMP CUSTOMER  
SCOPE



Specification:-

Type : Double acting hydraulic cylinder.  
 Bore dia = 36 mm, rod dia = 16 mm  
 Full Stroke = 26; LockStroke = 23 mm  
 Reserve Stroke = 3 mm  
 Operating pressure : max 70 bar/min 10 bar  
 Medium : Hydraulic oil (servo system HLP46/HLP68)

SURFACE FINISH		GENERAL TOLERANCES WHERE NOT SPECIFIED										QUICLOC					
Re value μm		0.025	0.05	0.1	0.2	0.4	0.8	1.6	3.2	6.3	12.5	25	50	100	PVT LTD	B'lore - 70	
0.5-6	6-30	30-120	120-315	315-1000	1000-2000	UP TO 6	6-30	30-120	120-400							SHEET NO OF	
±0.1	±0.2	±0.3	±0.5	±0.8	±1.2	±1'	±30'	±20'	±10'								
SCALE		TITLE										MATERIAL					
1:1		VERTICAL SWING CLAMP										-					
NAME		DATE										GROUP NO.					
DESIGN		MACHINE TYPE										SUPERCEDED BY					
DRAWN		-										REPLACES					
CHECKED		CUSTOMER:										DRAWING NO.					
APPROVED		-										S35304-CR					

LINEAR - LENGTH OR DIAMETER	ANGULAR-LENGTH IN MM OF SHORT SIDE OF ∠
0.5-6	UP TO 6
6-30	6-30
30-120	30-120
120-315	120-400
315-1000	120-400
1000-2000	120-400