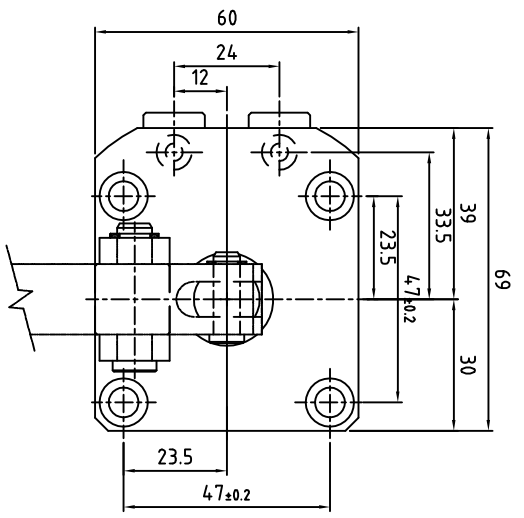
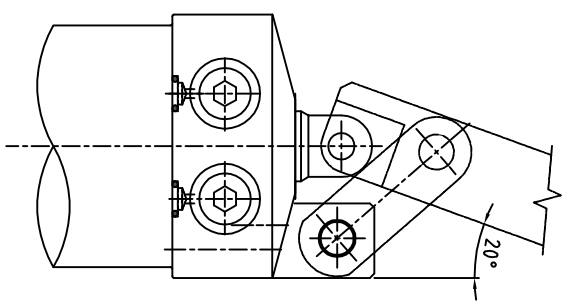
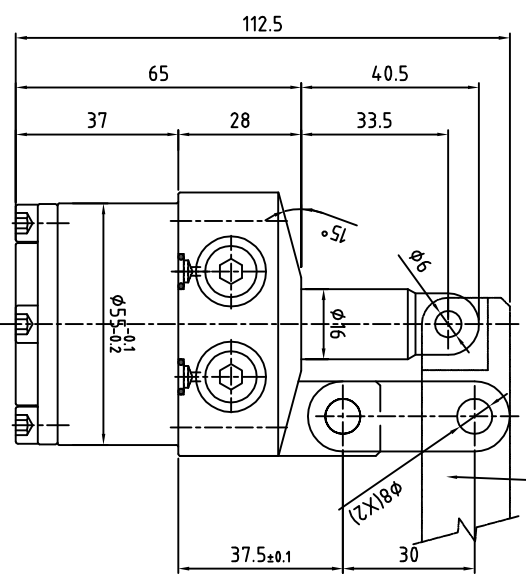
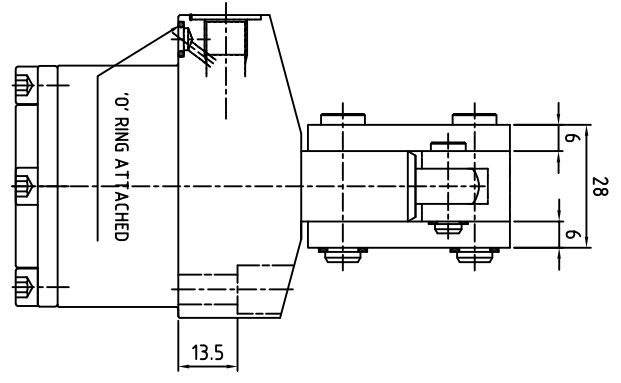


CLAMP CUSTOMER  
SCOPE

REVISION		TO	DATE	APPROVED
ZONE	REV	FROM		



Specification:-

Type : Double acting hydraulic cylinder.  
 Bore dia = 36 mm, rod dia = 16 mm  
 Full Stroke = 26; LockStroke = 23 mm  
 Reserve Stroke = 3 mm  
 Operating pressure : max 70 bar/min 10 bar  
 Medium : Hydraulic oil (servo system HLP46/HLP68)

SURFACE FINISH	REQUIREMENT	REQUIREMENT	REQUIREMENT	REQUIREMENT	REQUIREMENT	REQUIREMENT	REQUIREMENT	REQUIREMENT	REQUIREMENT
SURFACE FINISH	▽▽▽▽	▽▽▽▽	▽▽▽▽	▽▽	▽	▽	▽	▽	▽
Re volue μm	0.025	0.05	0.1	0.2	0.4	0.8	1.6	3.2	6.3

LINEAR - LENGTH OR DIAMETER	ANGULAR-LENGTH IN MM OF SHORT SIDE OF ∠	QUICLOC
0.5-6	UP TO 6	PVT LTD
6-30	6-30	B'lore - 70
30-120	±30'	
120-315	±20'	
315-1000	±10'	
1000-2000		

SCALE	TITLE	MATERIAL	SHEET NO
1:1	VERTICAL SWING CLAMP		OF

NAME	DATE	MACHINE TYPE	GROUP NO.	REPLACES
TRIJUAL	10/12/09	Double Acting		
TRIJUAL	10/12/09			

DESIGN	DRAWN	CHECKED	APPROVED	CUSTOMER	DRAWING NO.
TRIJUAL	TRIJUAL				S35304-CL