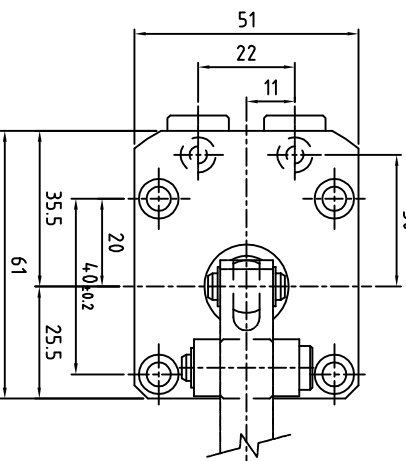
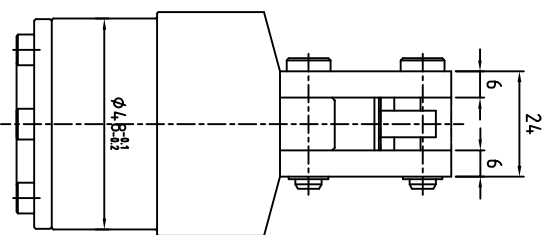
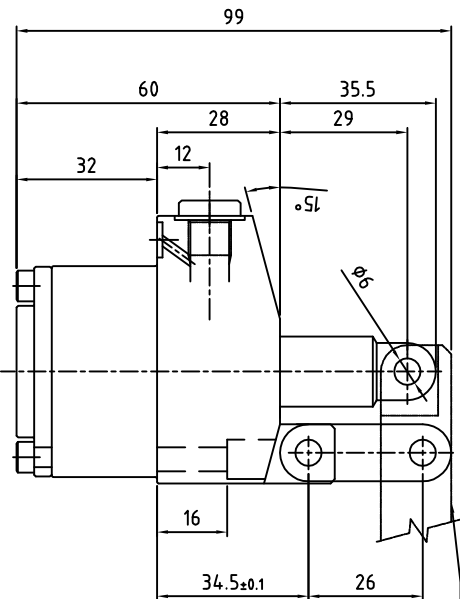


REVISION				TO	DATE	APPROVED
ZONE	REV	FROM				

CLAMP CUSTOMER  
SCOPE



**Specification:-**  
 Type : Double acting hydraulic cylinder.  
 Bore dia = 30 mm, rod dia = 16 mm  
 Full Stroke = 23.5; LockStroke = 20.5 mm  
 Reserve Stroke = 3 mm  
 Operating pressure : max 70 bar/min 10 bar  
 Medium : Hydraulic oil (servo system HLP46/HLP68)

SURFACE FINISH		GENERAL TOLERANCES WHERE NOT SPECIFIED										QUICLOC				
Re value	µm	0.025	0.05	0.1	0.2	0.4	0.8	1.6	3.2	6.3	12.5	25	50	100	PVT LTD	B'lore - 70
		▽▽▽▽	▽▽▽▽	▽▽▽▽	▽▽▽▽	▽▽	▽▽	▽	▽	▽	▽	▽	▽	▽		
LINEAR - LENGTH OR DIAMETER		120-315	315-1000	1000-2000	UP TO 6	6-30	30-120	120-400								
ANGULAR-LENGTH IN MM OF SHORT SIDE OF ∠		UP TO 6	6-30	30-120	120-400											
SCALE		1:1														
TITLE		VERTICAL SWING CLAMP														
MACHINE TYPE		Double Acting														
GROUP NO.		-														
SUPERCEDED BY		-														
REPLACES		-														
DRAWING NO.		S35303-CC														

1 2 3 4 5 6 7 8