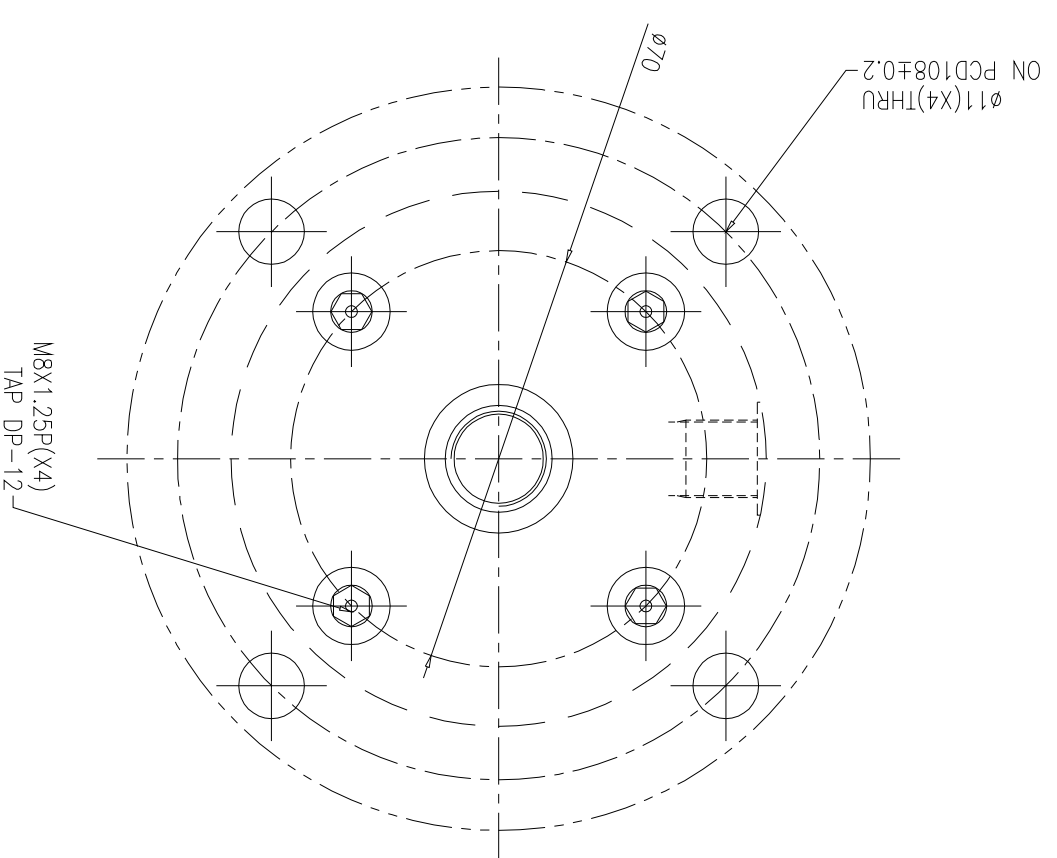
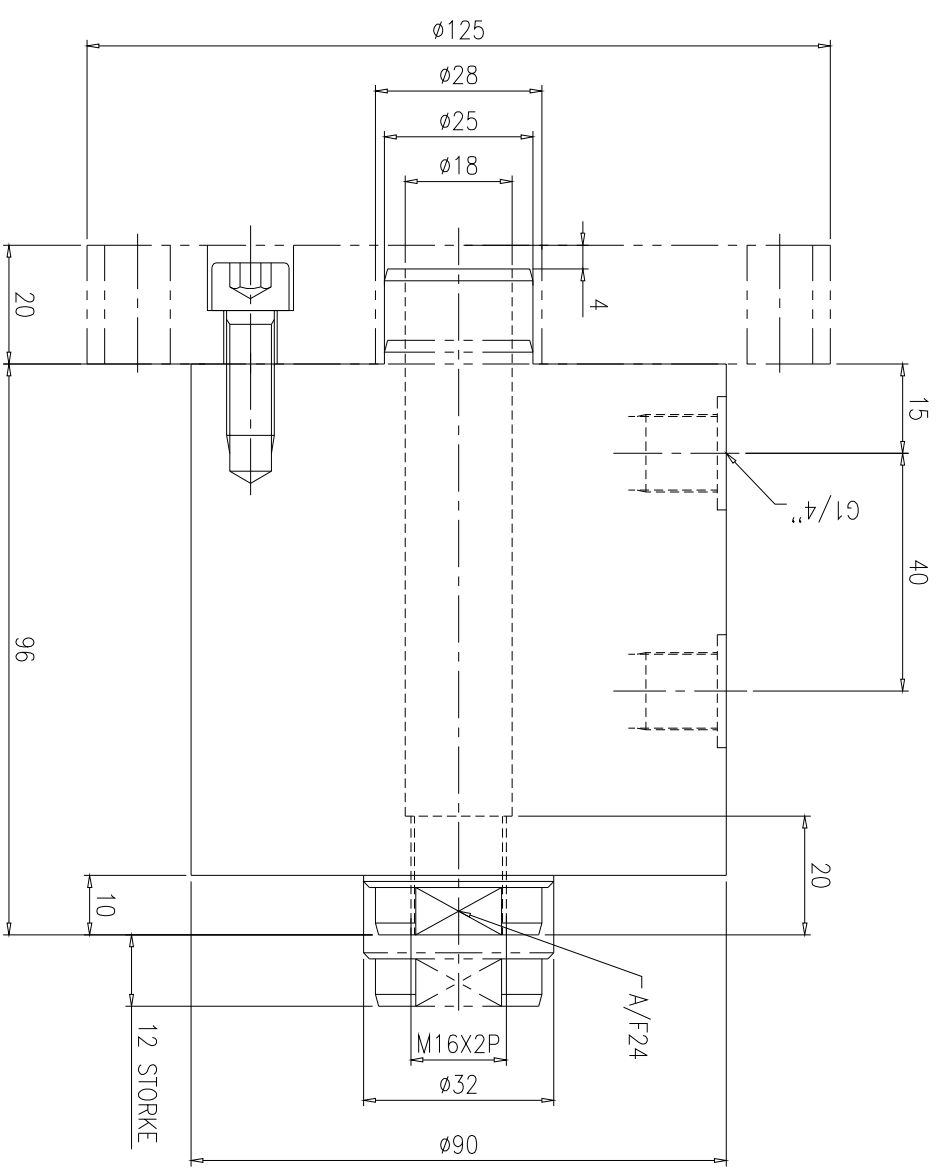


DESCRIPTION				
ZONE	REV	FROM	TO	DATE



MAXIMUM OPERATING PRESSURE	250 BAR
MINIMUM OPERATING PRESSURE	10 BAR
STROKE	12 MM
DISPLACEMENT IN CC	17.6 cc
EFF PISTON AREA	14.7 sq.cm

SURFACE FINISH	LINEAR - LENGTH OR DIAMETER	ANGULAR-LENGTH IN MM OF SHORT SIDE OF ∠	QUICKLOC
Ro value μm	0.025 0.05 0.1 0.2 0.4 0.8 1.6 3.2 6.3 12.5 25 50 100	UPTO 6 6-30 30-120 120-400	PVT LTD B'lore - 70

GENERAL TOLERANCES WHERE NOT SPECIFIED

SCALE	TITLE	MATERIAL	SHEET NO
±0.1	HOLLOW PISTON CYLINDER-D/A		
±0.2	BOREØ50X12 STROKE		

DESIGN	NAME	DATE	GROUP NO.
TSM	tirumol		

CHECKED	DRAWN	MACHINE TYPE	SUPERCEDED BY
	TSM	11-10-03	

APPROVED	CUSTOMER:	DRAWING NO.
		A41301

1	2	3	4	5	6	7	8
---	---	---	---	---	---	---	---