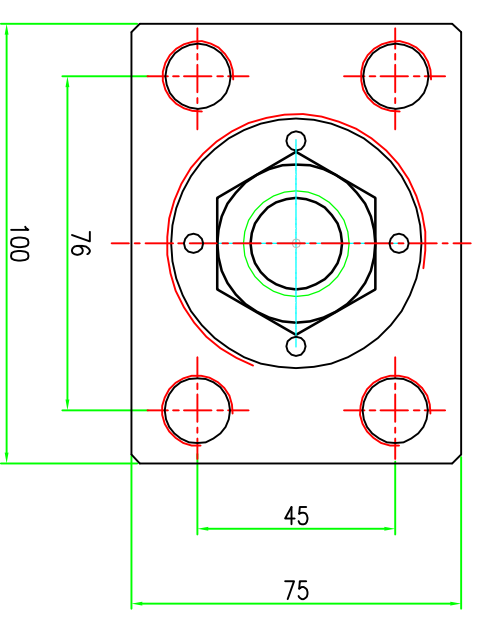
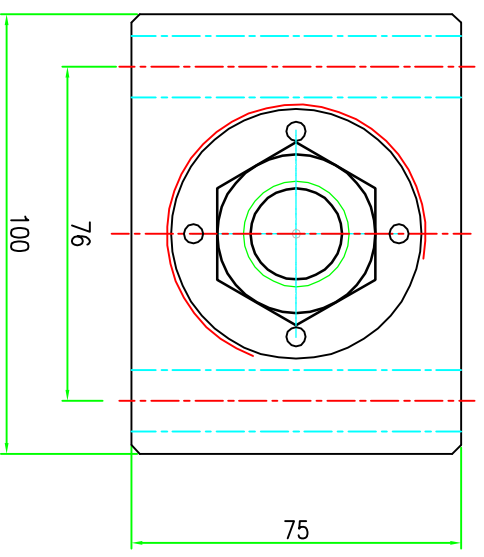
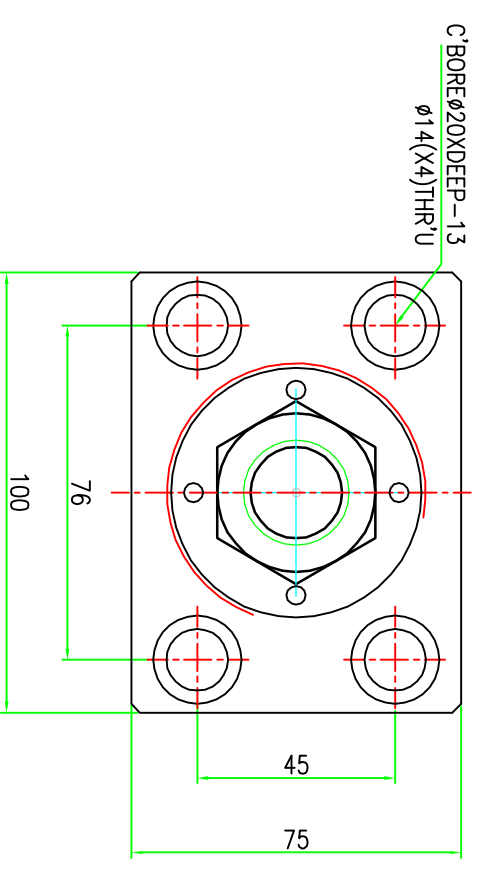
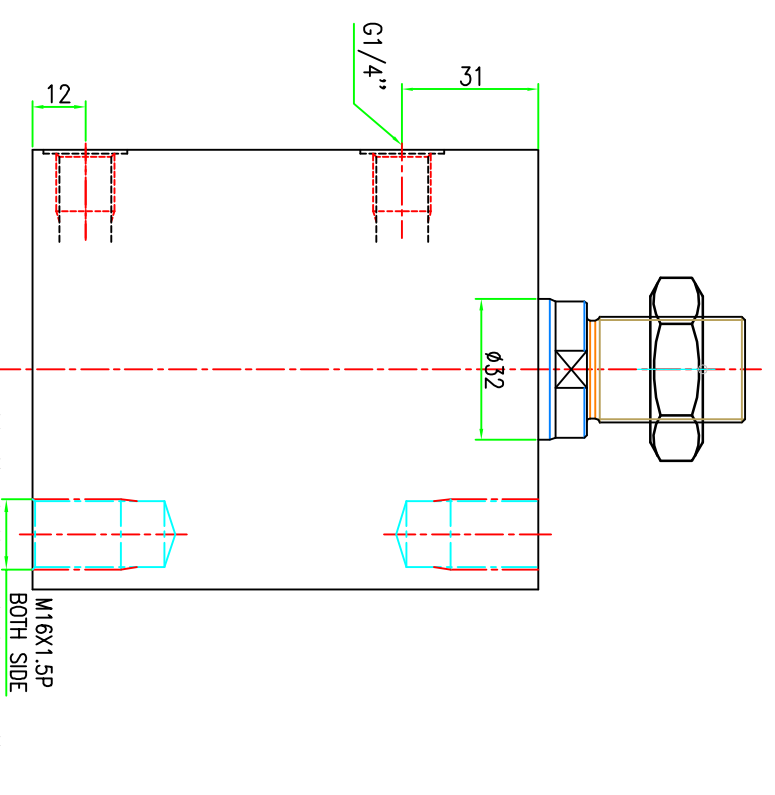
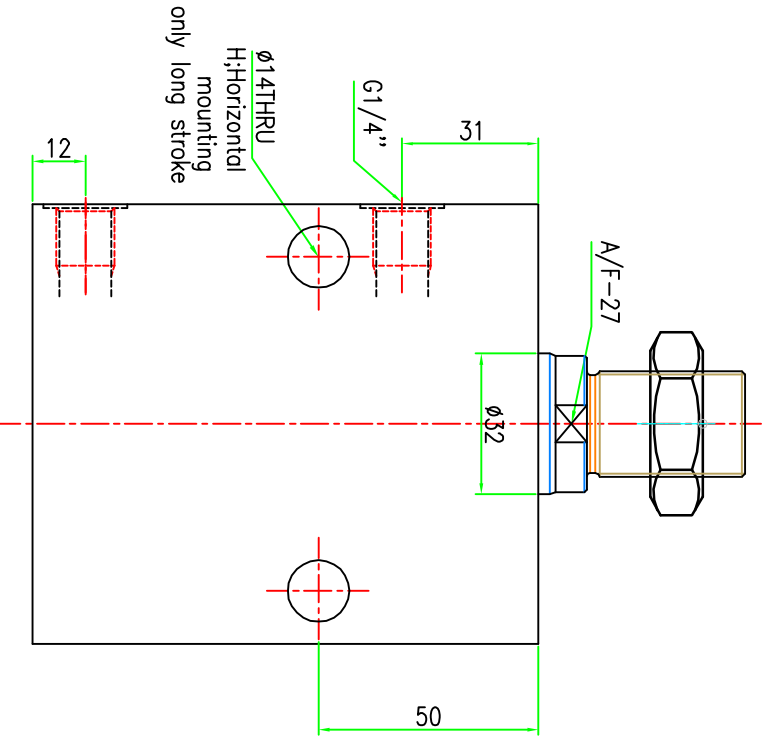
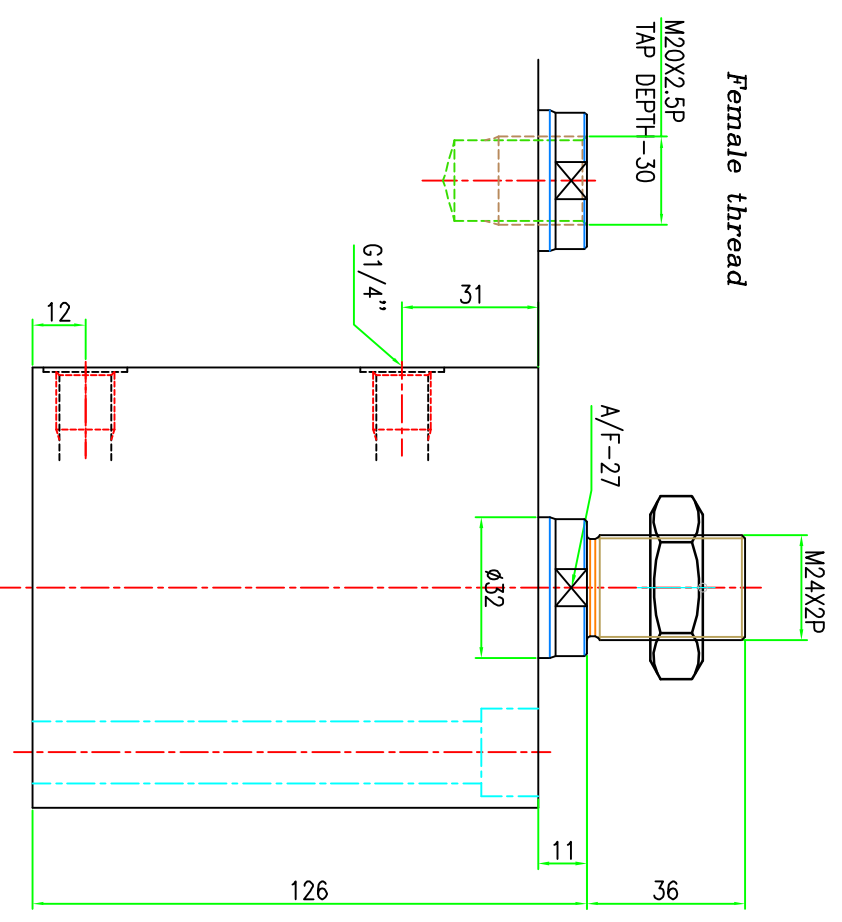


LONG STROKE (L)

optional against order only



Model NO-Male thread-A31309
Female thread-A31310

Specification:-
Type : Double acting hydraulic cylinder.
Bore dia = 50 mm, rod dia = 32 mm
Stroke = 50 mm
Long stroke 50mm. Shorter strokes are obtained by adding Spacers.
Operating pressure : max 250 bar/min 10 bar Medium
(servo system HLP46/HLP68)

SURFACE FINISH		Ra value μm		0.025		0.05		0.1		0.2		0.4		0.8		1.6		3.2		6.3		12.5		25		50		100	
LINEAR - LENGTH OR DIAMETER		30-120		120-315		315-1000		1000-2000		UP TO 6		6-30		30-120		120-400		ANGULAR-LENGTH IN MM OF SHORT SIDE OF \angle		6-30		30-120		120-400		MATERIAL: XXX		SHEET NO: 1 OF: 1	

- 1.0 GENERAL
- 1.1 ALL DIMENSIONS ARE IN MM.
- 1.2 DO NOT SCALE THE DRG.IF IN DOUBT ASK.
- 1.3 SUBJECT TO CHANGE FOR IMPROVEMENT.

DESIGN	TIRUMAL	DATE	22.08.08	TITLE BLOCK CYLINDER DOUBLE ACTING	MACHINE TYPE	GROUP NO:	SUPERCEDED BY	REPLACES
DRAWN	TIRUMAL	22.08.08						
CHECKED								
APPROVED								
SCALE: 1:1				CUSTOMER:		DRAWING NO: -		