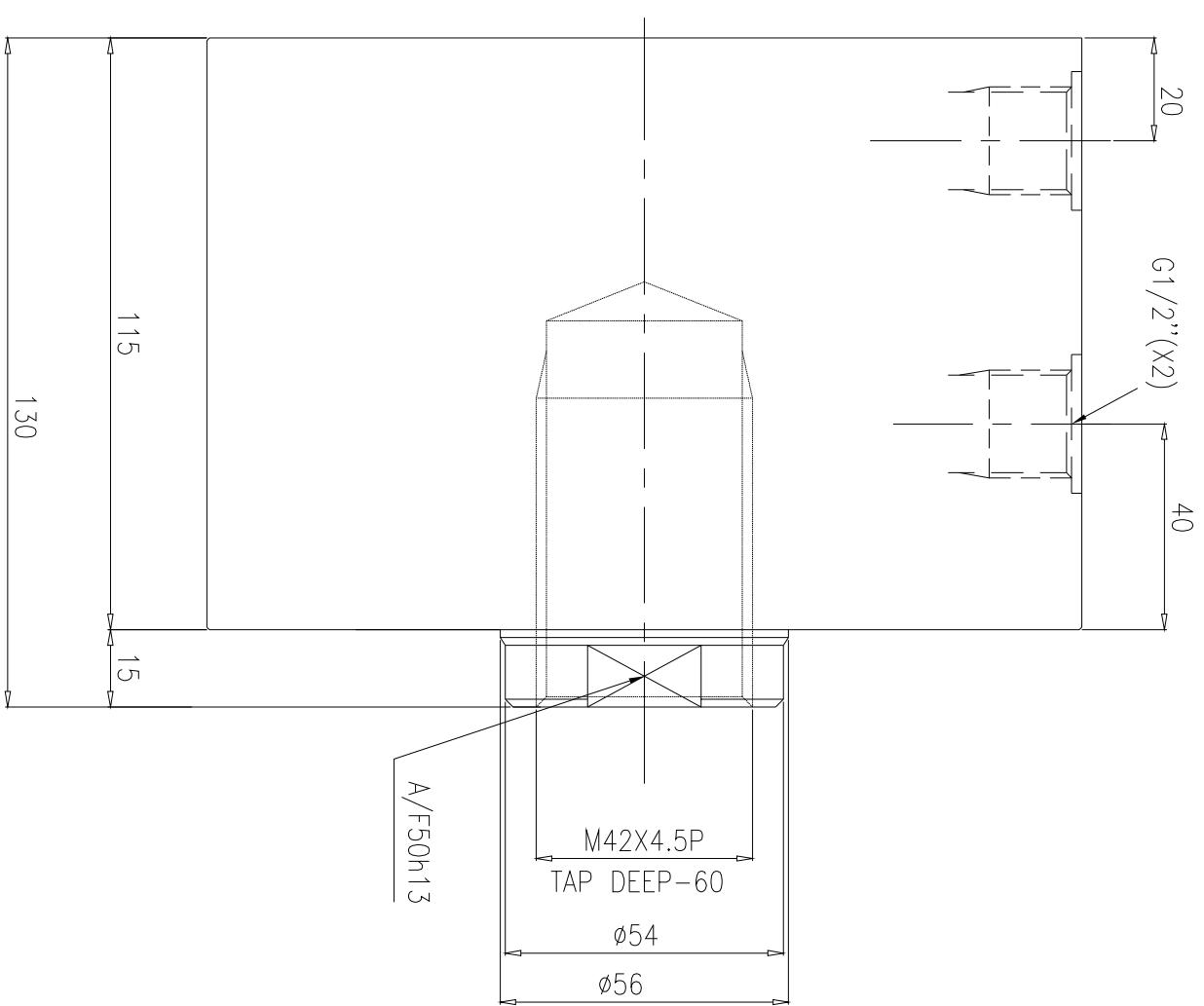
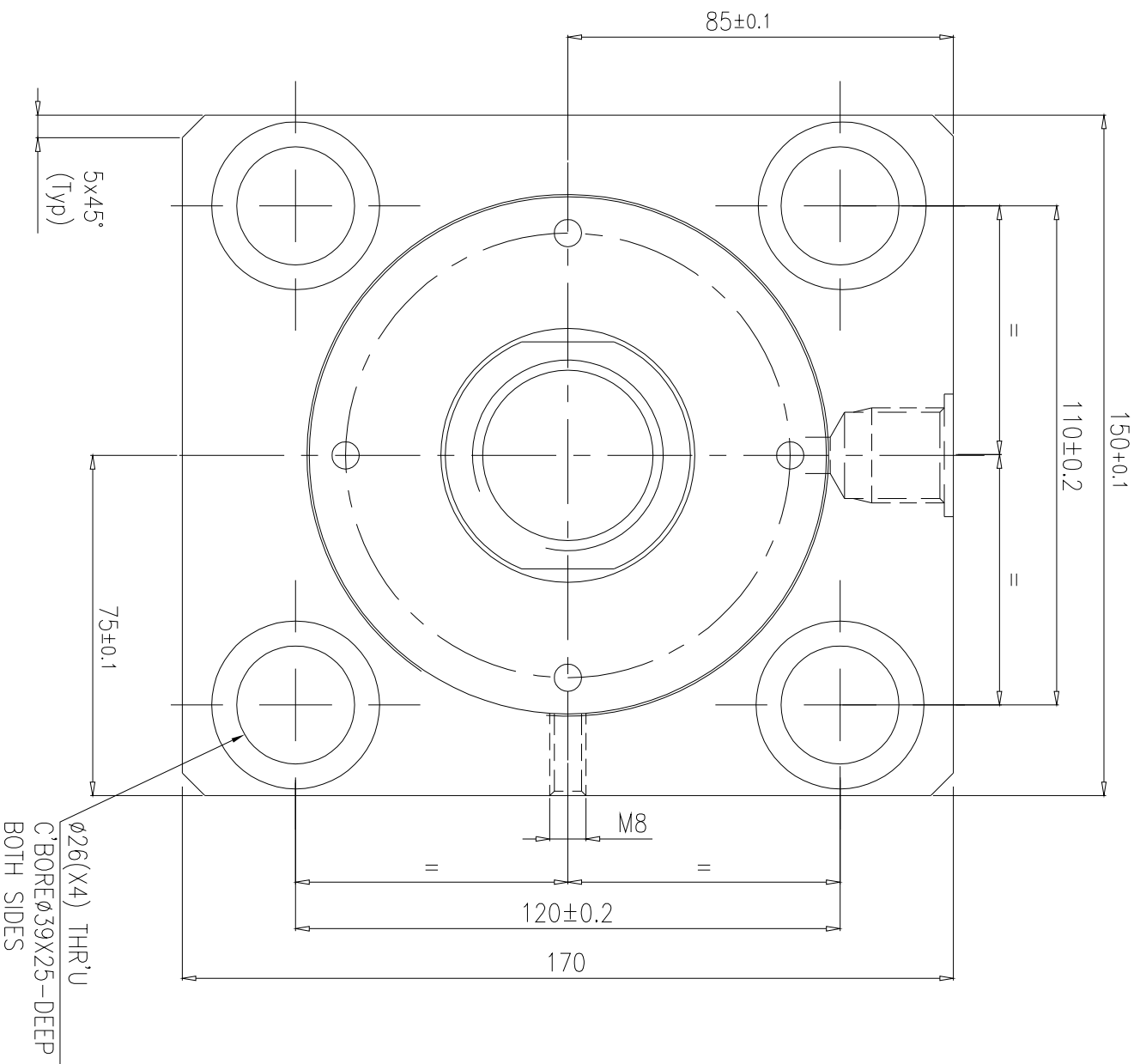


REVISION				DATE	APPROVED
ZONE	REV	FROM	TO		



**Specification:-**

Type : Doble acting hydraulic cylinder.  
 Bore dia = 100 mm, rod dia = 56 mm  
 Stroke = 25 mm  
 Operating pressure : max 200 bar/min 10 bar  
 Medium : Hydraulic oil  
 (servo system HLP46/HLP68)

SURFACE FINISH		▽▽▽▽	▽▽▽	▽▽	▽	~
LINEAR - LENGTH OR DIAMETER	ANGULAR-LENGTH IN MM OF SHORT SIDE OF	GENERAL TOLERANCES WHERE NOT SPECIFIED				
0.5-6	6-30	30-120	120-315	315-1000	1000-2000	UP TO 6
±0.1	±0.2	±0.3	±0.5	±0.8	±1.2	±1'
±0.1	±0.2	±0.3	±0.5	±0.8	±1.2	±1'
±0.1	±0.2	±0.3	±0.5	±0.8	±1.2	±1'

DESIGN	NAME	DATE	MACHINE TYPE	TITLE
DRAWN	TSM	27-04-05	DOUBLE ACTING	BLOCK CYLINDER
CHECKED				
APPROVED				

GROUP NO.	SHEET NO
SUPERCEDED BY	OF
REPLACES	

DRAWING NO.	QUICLOC
A13316-25-V	PVT LTD
	Bore - 70